

MAPPING SOFTWARE Meta Fisheries

FOR TRACKING FISHING VESSELS



Meta Fisheries is a mapping software for fleet management that automatically displays vessel location, route statistics and other satellite data.

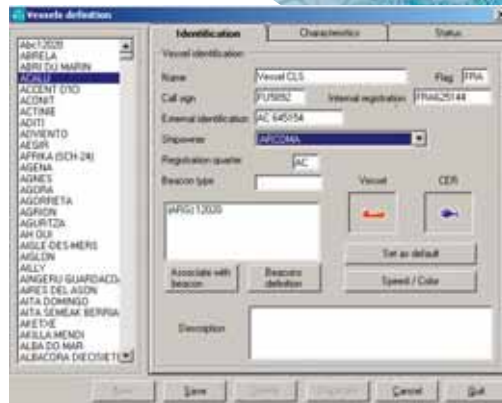
Use Meta Fisheries to

- Optimize fleet management by having a permanent visibility of your vessels' activities
- Comply with fishing regulations
- Pinpoint vessels on raster, vector or personal maps
- View route statistics (latitude, longitude, speed, heading)
- Configure a wide-range of alarms for different events (vessel enters/exits a Geographic Zone of Interest (GZI), speed out of limit, etc.)
- Download current and historic data and archive in map or table format
- View your vessels' catch of the day
- Keep a record of your vessels' fishing grounds
- Provide additional safety for your crew

Software capabilities

- Automatically sends alarms by e-mail, SMS or pop-up when a vessel enters a closely monitored zone or when unusual activity occurs (vessel is stationary, a new position is received, etc)
- Automatically computes route statistics (latitude, longitude, speed and heading)
- Imports maps in MapInfo format
- Displays and archives your vessels' catch reports
- Allows you to create groups of vessels
- Allows you to track all of your vessels at one time in one glance
- Allows you to identify vessels in your database
- Allows you to personalize map displays (zoom in, zoom out, select display units, define scale)

Each vessel is identified in your database.



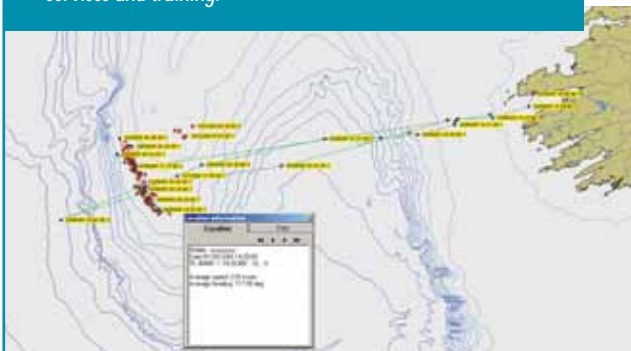
Meta Fisheries mapping software is just one element of our ArgoNet range of products and services. Developed and operated by CLS, ArgoNet is a reliable, satellite-based tracking solution that allows you to simplify VMS compliance while optimizing fleet management. Our ArgoNet products and services have been trusted by seamen for nearly 20 years, because we provide the highest levels of quality, reliability and customer care.

It is also the only product on the market today to offer one point of contact: from equipment and software to airtime to customer services and training.

Pinpoint your vessels on coastal and marine maps.



Meta Fisheries automatically displays vessel routes and positions.



Minimum requirements

- Pentium processor
- Microsoft compatible: runs on Windows 98, 2000 and Windows XP
- 512 Mo of available RAM
- 100 MB of disk space to install MetaFisheries
- Modem or Internet access supporting Telnet to receive your data from data servers
- An electronic mailbox to receive data automatically or send alarms
- A GSM modem to send SMS alarm messages to GSM mobile phones

